



HSBC  The world's local bank

Portfolio Online User Guide

Welcome to Portfolio Online

The Portfolio Online website offers a range of new tools, menus and options designed to make it easy to access and manage your account information.

This guide provides you with illustrated descriptions that will help you get the most out of your online experience. If you have any questions, please don't hesitate to contact your HSBC administrator. For technical support, please call us toll free at 1-877-543-HSBC (4722) between 8:30 and 5:00 p.m. Monday through Friday (EST). We will be happy to provide you with any assistance you require.

Homepage

Left navigation

Use this to navigate through your online account or to get information.

The screenshot shows the HSBC Portfolio Online homepage. At the top left is the HSBC logo and tagline 'The world's local bank'. A welcome message reads 'Welcome: smithj07 | You have 2 new messages. | Log Out'. Below this is a navigation menu with 'Homepage' selected. A central banner promotes 'An easy way to manage your account.' with a link to a guided tour. The main content area is titled 'Welcome to your accounts' and shows a table of accounts as of March 02, 2007. The table lists four accounts with their IDs, titles, and market values. A 'Total estimated in USD' row shows a value of \$78,776.47. Below the table is an 'IMPORTANT INFORMATION' section. On the left, a 'My Utilities' sidebar contains links for 'Secure E-Mail', 'Compose a Message', 'Change My Username', 'Change My Memorable Question & Answer', 'Change My Access Code', 'More Preferences...', and 'Log Out'.

My Utilities

Tools you can use to set your preferences for your account. You can also access your e-mail and send messages.

Easy, safe communication

Connect with your account administrator via encrypted e-mail – more secure than public e-mail accounts.

Enhanced customization

Change your username, Memorable Q/A, Access Code and more with a single click.

User information header

Locate your log in status, be notified of new e-mails and easily log out from your online account by clicking **Log Out**.

Latest updates

Keep up-to-date with the latest marketing, news and information regarding your online account service.

Two ways to view your accounts

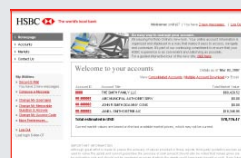
Click on an account ID to view a specific account in the **Individual View** mode.

Get more details about all your accounts at the same time by clicking on **Consolidated Accounts**.

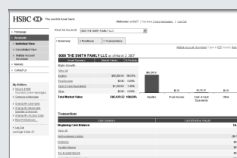
Multiple Account Download

Download information on up to five accounts at a time in Excel format.

To skip ahead please click on a screen ▶



Homepage



Individual Account View



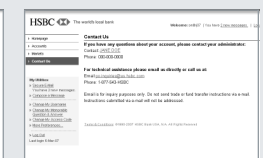
Consolidated Account View



Multiple Account Download



Markets



Contact Us

Individual Account View – Summary

This page offers a summary of assets and transactions for the account you selected, plus links to deeper levels of detail.

Convenient account access

Dropdown menu allows you to choose between different individual accounts or Consolidated View.

Navigation tabs

Easily navigate between Summary, Positions and Transactions by clicking the appropriate tab.

Links to detailed view

Click on links in the Asset Summary and Cash Summary columns for more detailed information.

0000 THE SMITH FAMILY LLC as of March 2, 2007

Asset Summary	Market Values	% Portfolio
Style: Growth		
View All		
Equities	\$59,265.91	98.07%
Fixed Income	\$0.00	0.00%
Cash & Cash Equivalents	\$1,163.61	1.93%
Other	\$0.00	0.00%
Total Market Value	\$60,429.52	100.00%

Chart display: A bar chart showing asset allocation with Equities at \$59,265.91, Fixed Income at \$0.00, Cash & Cash Equivalents at \$1,163.61, and Other at \$0.00.

Transactions	Cash Summary	Cash Effective Amount
Beginning Cash Balance		\$4.76
View All		
Net Investment Activity		(\$4.76)
Dividends		\$0.00
Taxable Interest		\$0.00
Tax-Exempt Interest		\$0.00
Net Additions/Withdrawals		\$0.00
Other/Misc		\$0.00

■ **Multiple account download**
Download information on up to five accounts at a time in a single Excel spreadsheet.

■ **Help when you need it**
Online help – covering all tools and site content – is accessible.

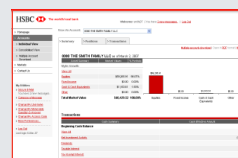
■ **View as a PDF**
Click **PDF** to download page in PDF format.

■ **Chart display**
A simplified asset allocation chart provides a visual summary of your investments.

To skip ahead please click on a screen ►



Homepage



Individual Account View



Consolidated Account View



Multiple Account Download



Markets



Contact Us

Individual Account View - Position

Viewing positions

You can easily filter your positions by asset class – Equities, Fixed Income, Cash & Cash Equivalents and Other – using the Position Type dropdown menu, or choose All.

Multiple account download | Open in [Excel](#) or [PDF](#) format | [Help](#)

0000 THE SMITH FAMILY LLC as of March 2, 2007

Position Type:

Description	Units	Unit Price	Market Value	Cost	Unrealized Gain/Loss	Estimated Annual Income	Yield
HSBC PREMIER MKT RT A/C FED FDS + 5 BPS (5.30%) Pricing Date: 03/02/2007 CUSIP: 000000000	1,163.61	\$1.00	\$1,163.61	\$1,163.61	\$0.00	\$61.67	5.30
HSBC PREMIER MKT INTL STOCK INDEX FD #000 Pricing Date: 03/02/2007 CUSIP: 000000000	671.68	\$17.45	\$11,720.82	\$11,764.02	(\$43.20)	\$270.02	2.30
HSBC PREMIER MKT INDX-A FUND #00 Pricing Date: 03/02/2007 CUSIP: 000000000	1,412.93	\$33.65	\$47,545.09	\$47,730.61	(\$185.52)	\$740.38	1.56
Total							

Current market values are based on the last available market data.

Equities

Description	Units	Unit Price	Market Value	Cost	Unrealized Gain/Loss	Estimated Annual Income
HSBC PREMIER INTL STOCK INDEX FD #000 Pricing Date: 03/02/2007 CUSIP: 000000000	671.68	\$17.45	\$11,720.82	\$11,764.02	(\$43.20)	\$270.02
Total						

Export the following taxlot information in [Excel](#) or [PDF](#) format

ACQUISITION DATE: 12/01/2006	656.76		\$11,460.46	\$11,500.00	(\$39.54)
ACQUISITION DATE: 12/28/2006	14.90		\$260.00	\$264.02	(\$4.02)
Total	671.66		\$11,720.46	\$11,764.02	(\$43.56)

HSBC PREMIER MKT INDX-A FUND #00 Pricing Date: 03/02/2007 CUSIP: 000000000	1,412.93	\$33.65	\$47,545.09	\$47,730.61	(\$185.52)	\$740.38
Total				\$59,494.63		\$1,010.40

Formatting and printing flexibility

Download and print your information the way you prefer to use it – in either Excel or PDF format.

View Taxlots

Click on [View Taxlots](#) for individual assets. The page will expand with detailed information on each asset purchase.

Download taxlots

Get taxlot information in PDF or Excel format with one click.

To skip ahead please click on a screen ▶



Homepage



Individual Account View



Consolidated Account View



Multiple Account Download



Markets



Contact Us

Individual Account View - Transactions

- Filter by transaction type**
 View transactions by category using the dropdown menu.

Multiple account download | Open in [Excel](#) or [PDF](#) format | [Help](#)

0000 THE SMITH FAMILY LLC as of March 2, 2007

Filter By Transaction Type:

- Net Investment Activity
- All
- Net Investment Activity
- Sales
- Purchases
- Corporate Actions
- Dividends
- Taxable Interest
- Tax Exempt Interest
- Net Additions/Withdrawals
- Additions
- Withdrawals
- Other

Date Range: From (mm/dd/yyyy) 03/01/07 To (mm/dd/yyyy) 03/02/07

Go

Units / Shares	Description	Principal	Income	Invested Income
	Ending Balance	(\$163.61)	\$163.61	\$0.00
4.76	PURCHASED 4.76 UNITS OF HSBC PREMIER MKT RT FED+SBPS 5.30% TRADE DATE 3/1/07	(\$4.76)		
	Beginning Balance	(\$158.85)	\$163.61	\$0.00

in the last available market prices, which may not be current.

Terms & Conditions ©1990-2007 HSBC Bank USA, N.A. All Rights Reserved

- Viewing transactions**
 The transaction page loads with current-month transactions, downloadable in your choice of Excel or PDF.

- Streamlined date-range options**
 A pop-up calendar makes it easy to set up date-range filters for transactions up to 18 months. Selecting **Current Month** eliminates the need to type in "from" and "to" dates.

To skip ahead please click on a screen ▶



Homepage



Individual Account View



Consolidated Account View



Multiple Account Download



Markets



Contact Us

Consolidated Account View – All Accounts

This page offers a high-level look at all your accounts at the same time.

Navigation

Clicking on the drop-down menu switches your views from **Consolidated** view mode to **Individual** account view mode.

Tabs offer quick links to your consolidated **Asset Summary**, **All Transactions** and **Pending Trades**.

Detailed view

Clicking on a dollar amount will take you to a detailed view of that position in the **Individual Account View** mode. Clicking on a linked dollar amount in the **Total Account Market Value** column will take you to the summary page for that account.

HSBC The world's local bank

Welcome: smith07 | You have 2 new messages. | [Log Out](#)

View An Account: Consolidated View

[All Accounts](#) | [Asset Summary](#) | [All Transactions](#) | [Pending Trades](#)

[Multiple account download](#) | Open in [Excel](#) or [PDF](#) format | [Help](#)

All Accounts as of March 2, 2007

Account ID	Account Title	Equities	Fixed Income	Cash & Cash Equivalents	Other	Total Acct Mkt Value	% of Portfolio
0000	THE SMITH FAMILY LLC	\$59,265.91	\$0.00	\$1,163.61	\$0.00	\$60,429.52	76.71
00-000001	ABC MUNICIPAL AUTH DEBT SERV	\$0.00	\$0.00	\$0.00	\$0.00	\$0.00	0.00
00-000002	JOHN R SMITH DDA MNY CONS	\$0.00	\$0.00	\$0.00	\$0.00	\$0.00	0.00
00-000003	JANE L SMITH DISTRIB A/C	\$0.00	\$0.00	\$18,346.95	\$0.00	\$18,346.95	23.29
Total		\$59,265.91	\$0.00	\$19,510.56	\$0.00	\$78,776.47	100.00%

[Summary](#) | [Positions](#) | [Transactions](#)

[Multiple account download](#) | Open in [Excel](#) or [PDF](#)

0000 THE SMITH FAMILY LLC as of March 2, 2007

Position Type:

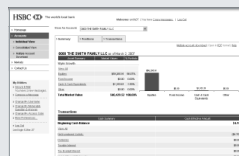
Equities

Description	Units	Unit Price	Market Value	Cost	Unrealized Gain/Loss	Estimated Annual Income
HSBC PREMIER INTL STOCK INDEX FD #000 Pricing Date: 03/02/2007 CUSIP: 000000000	671.68	\$17.45	\$11,720.82	\$11,764.02	(\$43.20)	\$2
HSBC PREMIER MKT INDX-A FUND #00 Pricing Date: 03/02/2007 CUSIP: 000000000	1,412.93	\$33.65	\$47,545.09	\$47,730.61	(\$185.52)	\$7

To skip ahead please click on a screen ▶



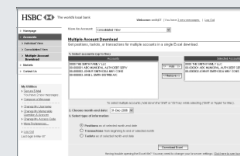
Homepage



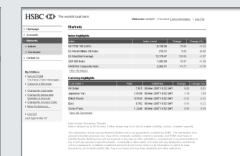
Individual Account View



Consolidated Account View



Multiple Account Download



Markets



Contact Us

Consolidated Account View – Asset Summary

View taxlots

Click on [View Taxlots](#) to make the page expand with detailed information on each asset purchase.

View asset holders

Click on [Asset Holders](#) to make the page expand with detailed information on the holders for the selected asset.

Asset Summary as of March 2, 2007

Description	Units	Cost	Unit Price	Market Value	Est. Annual Income	Yield	Unrealized Gain/Loss	% of Port.
HSBC BANK USA NA COLLECTIVE TRUST SHORT TERM INVESTMENT FUND DIRECTED	18,346.95	\$18,346.95	\$1.00	\$18,346.95	\$0.00	0.00%	\$0.00	23.29%
View Taxlots								
Asset Holders								
1 Asset Holder								
Asset Summary as of March 2, 2007								
Close Taxlots								
1 Asset Holder								
Export the following taxlot information in Excel or PDF format.								
Acquisition Date: 06/16/1995	167.34	\$167.34		\$167.34			\$0.00	
Acquisition Date: 07/05/1995	0.45	\$0.45		\$0.45			\$0.00	
Acquisition Date: 07/05/1995	17.04	\$17.04		\$17.04			\$0.00	
Total								
				\$78,776.47	\$1,072.07		(\$228.72)	100.00%

Asset Summary as of March 2, 2007

Description	Units	Cost	Unit Price	Market Value	Est. Annual Income	Yield	Unrealized Gain/Loss
HSBC BANK USA NA COLLECTIVE TRUST SHORT TERM INVESTMENT FUND DIRECTED	18,346.95	\$18,346.95	\$1.00	\$18,346.95	\$0.00	0.00%	\$0.00
View Taxlots							
Asset Holders							
1 Asset Holder							
Export the following asset holder information in Excel or PDF format. Close							
ABC CORP STK DISTRIB A/C	18,346.95	\$18,346.95	\$1.00	\$18,346.95	\$0.00	0.00%	\$0.00
Total							
				\$18,346.95	\$18,346.95	\$0.00	\$0.00

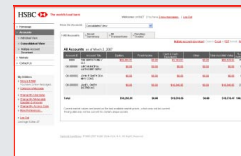
To skip ahead please click on a screen ▶



Homepage



Individual Account View



Consolidated Account View



Multiple Account Download



Markets



Contact Us

Consolidated Account View – All Transactions

Detailed view

Clicking on a dollar amount will take you to a detailed view of that transaction in the Individual Account View mode. Clicking on a dollar amount in the **Ending Cash Balance** column will take you to the Asset Summary page in the Individual Account View mode.

Clicking on the dollar amount in the **Ending Cash Balance** column will take you to the Asset Summary page for this account in the Individual Account View mode.

The screenshot displays the HSBC online banking interface. The main section shows a table of 'All Transactions' for '0000 THE SMITH FAMILY LLC' as of March 2, 2007. The table has columns for Account Title, Beginning Cash Balance, Net Investment Activity, Dividends, Taxable Interest, Tax-Exempt Interest, Net Additions/Withdrawals, Other Misc., and Ending Cash Balance. A red box highlights the 'Ending Cash Balance' column, and a red arrow points from a dollar amount in this column to a detailed view of a transaction for '0000 THE SMITH FAMILY LLC'.

The detailed view shows a purchase of 4.76 units of HSBC Premier stock for \$4.76. The beginning balance is \$158.85, and the ending balance is \$163.61. The transaction is dated 03/01/07.

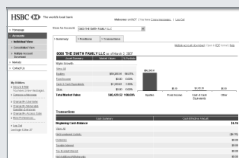
Account Title	Beginning Cash Balance	Net Investment Activity	Dividends	Taxable Interest	Tax-Exempt Interest	Net Additions/Withdrawals	Other Misc.	Ending Cash Balance
THE SMITH FAMILY LLC	\$4.76	(\$4.76)	\$0.00	\$0.00	\$0.00	\$0.00	\$0.00	\$0.00
ABC MUNICIPAL AUTH DEBT SERV	\$0.00	\$0.00	\$0.00	\$0.00	\$0.00	\$0.00	\$0.00	\$0.00
JOHN R SMITH DDA	\$0.00	\$0.00	\$0.00	\$0.00	\$0.00	\$0.00	\$0.00	\$0.00

ts / Shares	Description	Principal	Income	Invested
Ending Balance		(\$163.61)	\$163.61	
4.76	PURCHASED 4.76 UNITS OF HSBC PREMIER MKT RT FED+5BPS 5.30% TRADE DATE 3/1/07	(\$4.76)		
Beginning Balance		(\$158.85)	\$163.61	

To skip ahead please click on a screen ►



Homepage



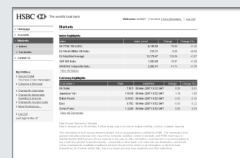
Individual Account View



Consolidated Account View



Multiple Account Download



Markets



Contact Us

Consolidated Account View – Pending Trades

This page provides a convenient overview of all of the pending trades in your account.

HSBC The world's local bank

Welcome: smith07 | You have [2 new messages](#) | [Log Out](#)

View An Account: Consolidated View

[All Accounts](#) | [Asset Summary](#) | [All Transactions](#) | [Pending Trades](#)

[Multiple account download](#) | Open in [Excel](#) or [PDF](#) format | [Help](#)

Pending Trades as of March 2, 2007

Account ID	Type	Trade Date	Description	Net Amount	Expected Settlement
0000	Sale	02-Mar-07	530.0000 ABCD INTERNATIONAL LTD	\$13,896.60	05-Mar-07
00-000001	Purchase	02-Mar-07	10.0000 ABCD1234 INC	(\$59.68)	05-Mar-07
00-000002	Sale	02-Mar-07	5.0000 ABCDEFG 12345 CO	\$110.82	05-Mar-07

[Terms & Conditions](#) ©1990-2007 HSBC Bank USA, N.A. All Rights Reserved

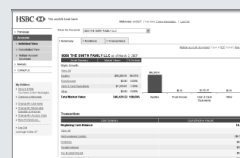
My Utilities

- [Secure E-Mail](#)
You have 2 new messages.
[Compose a Message](#)
- [Change My Username](#)
- [Change My Memorable Question & Answer](#)
- [Change My Access Code](#)
- [More Preferences...](#)
- [Log Out](#)
Last login 6-Mar-07

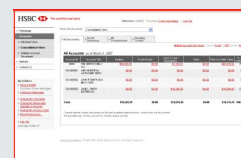
To skip ahead please click on a screen ►



Homepage



Individual Account View



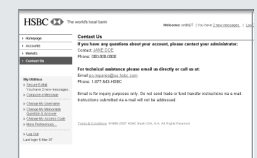
Consolidated Account View



Multiple Account Download



Markets



Contact Us

Multiple Account Download

This page allows you to download, view and print information in a single Excel spreadsheet for up to five accounts at a time.

- **Information at your fingertips**
Get the exact information you need by clicking on [Positions](#), [Transactions](#), or [Taxlots](#).

HSBC The world's local bank

Welcome: smith07 | You have [2 new messages](#). | [Log Out](#)

View An Account: Consolidated View

Multiple Account Download
Get positions, taxlots, or transactions for multiple accounts in a single Excel download.

1. Select accounts (up to five)

Accounts	Selected Accounts
0000 THE SMITH FAMILY LLC 00-000001 ABC MUNICIPAL AUTH DEBT SERV 00-000002 JOHN R SMITH DDA MNY CONS 00-000003 JANE L SMITH DISTRIB A/C	0000 THE SMITH FAMILY LLC 00-000001 ABC MUNICIPAL AUTH DEBT SERV 00-000002 JOHN R SMITH DDA MNY CONS

To select multiple accounts, hold down the 'Shift' or 'Ctrl' key while selecting ('Shift' or 'Apple' for Mac).

2. Choose month-end date: 31-Dec-2006

3. Select type of information

- Positions** as of selected month-end date
- Transactions** from beginning to end of selected month
- Taxlots** as of selected month-end date

[Download Excel](#)

Having trouble opening the Excel file? You may need to change your browser settings. [Click here to see how.](#)

[Terms & Conditions](#) ©1990-2007 HSBC Bank USA, N.A. ; HSBC Private Bank International. All Rights Reserved

To skip ahead please click on a screen ▶



Homepage



Individual Account View



Consolidated Account View



Multiple Account Download



Markets



Contact Us

Markets – Index and Currency Highlights

Get current information on major financial indices and currency exchange rates from Moneyline Telerate.

HSBC The world's local bank

Welcome: smithj07 | You have [2 new messages](#) | [Log Out](#)

[▶ Homepage](#)
[▶ Accounts](#)
[▶ Markets](#)
[▶ Indices](#)
[▶ Currencies](#)
[▶ Contact Us](#)

My Utilities

- ▶ [Secure E-Mail](#)
You have 2 new messages.
- ▶ [Compose a Message](#)
- ▶ [Change My Username](#)
- ▶ [Change My Memorable Question & Answer](#)
- ▶ [Change My Access Code](#)
- ▶ [More Preferences...](#)
- ▶ [Log Out](#)
Last login 6-Mar-07

Markets

Index highlights

Index	Index Level	Change	Change (%)
UK FTSE 100 (UKX)	6,138.50	79.80	+1.32
DJ World Utilities Stk Index	215.31	0.00	+0.00
DJ Industrial Average	12,179.47	129.06	+1.07
S&P 500 Index	1,393.09	18.97	+1.38
NASDAQ Composite Index	2,382.41	41.73	+1.78

[View All Indices](#)

Currency highlights

1 US Dollar =	Rate	Date/Time	Change	Change (%)
HK Dollar	7.815	06-Mar-2007 19:32 GMT	0.00	0.01
Japanese Yen	116.68	06-Mar-2007 19:52 GMT	1.19	1.03
British Pound	0.5183	06-Mar-2007 19:52 GMT	-0.00	-0.40
Euro	0.762	06-Mar-2007 19:52 GMT	-0.00	-0.22
Swiss Franc	1.2246	06-Mar-2007 19:52 GMT	0.00	0.34

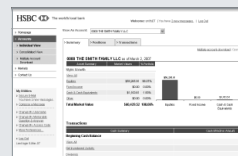
[View All Currencies](#)

Data Source: Moneyline Telerate.
Data is delayed up to 20 minutes. Further delays may occur due to market volatility, volume, or system capacity.

To skip ahead please click on a screen ▶



Homepage



Individual Account View



Consolidated Account View



Multiple Account Download



Markets



Contact Us

Contact Us

Use the Contact Us page to stay in touch.

- Contact your account administrator by e-mail or by phone.
- Get technical assistance by e-mail or by phone.

HSBC The world's local bank

Welcome: smithj07 | You have [2 new messages](#). | [Log Out](#)

[▶ Homepage](#)
[▶ Accounts](#)
[▶ Markets](#)
[▶ **Contact Us**](#)

My Utilities

- ▶ [Secure E-Mail](#)
You have 2 new messages.
- ▶ [Compose a Message](#)
- ▶ [Change My Username](#)
- ▶ [Change My Memorable Question & Answer](#)
- ▶ [Change My Access Code](#)
- ▶ [More Preferences...](#)
- ▶ [Log Out](#)
Last login 6-Mar-07

Contact Us

If you have any questions about your account, please contact your administrator:
 Contact: [JANE DOE](#)
 Phone: 000-000-0000

For technical assistance please email us directly or call us at:
 Email: po.inquiries@us.hsbc.com
 Phone: 1-877-543-HSBC

Email is for inquiry purposes only. Do not send trade or fund transfer instructions via e-mail. Instructions submitted via e-mail will not be addressed.

[Terms & Conditions](#) ©1990-2007 HSBC Bank USA, N.A. All Rights Reserved

To skip ahead please click on a screen ▶



Homepage



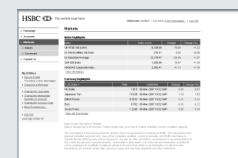
Individual Account View



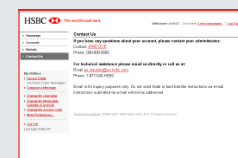
Consolidated Account View



Multiple Account Download



Markets



Contact Us